

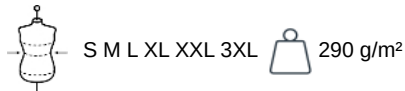
KARIBAN

K6164

Safari Men Jacket

- Twill construction: supple yet sturdy.
- Washed fabric with an intentionally aged look.
- Adjustable drawstring waist.

100% cotton. Twill construction. Straight cut. Washed garment. This technique may result in colour variations from one product to another, making each piece unique. Zip fastening with metal slider and main fabric pull tab, as well as a button placket with invisible press studs at centre front. Finished on the inside with piping. Four outside pockets with press studs. Cuff with decorative placket held in place with press stud. Adjustable drawcord at waist with leather-effect stopper inside garment. Shoulder tab with button. Inside pocket with Velcro. Inside half moon for easy customisation with inside hanging strap.



More information

Logistic



Country of origin



CN - China

Customs code



62013010



Washed
black

Washed
Light
Khaki

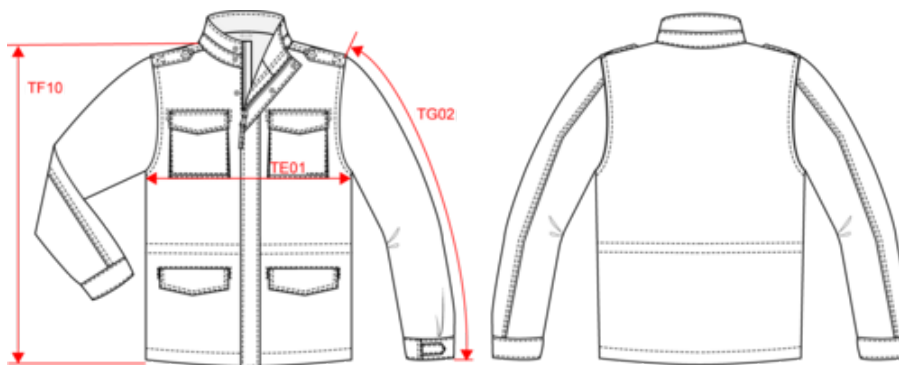


KARIBAN

K6164

Safari Men Jacket

Dimensions (cm)



Measurements in cm	S	M	L	XL	XXL	3XL
TE01 - 1/2 chest width at 1.5cm below armhole	54.00	57.00	60.00	63.00	66.00	69.00
TF01 - Total height from HSP	76.50	78.50	80.50	82.50	84.50	86.50
TG02 - Long sleeve length	65.00	66.00	67.00	68.00	69.00	70.00

KARIBAN

K6164

Safari Men Jacket

Colours information



Washed black

RVB : 43,39,42
Pantone C : Neutral Black
Pantone TCX : 19-4008TCX



Washed Light Khaki

RVB : 92,90,70
Pantone C : 7764C
Pantone TCX : 19-0512TCX

Logistic



15

Sizes	Width (cm)	Height (cm)	Length (cm)	Net weight (kg)	Gross weight (kg)	Pieces/Box	Pieces/Bundle
S	40.00000	27.00000	60.00000	12.90000	13.90000	15	1
M	40.00000	27.00000	60.00000	13.60000	14.60000	15	1
L	40.00000	27.00000	60.00000	14.20000	15.20000	15	1
XL	40.00000	30.00000	60.00000	14.40000	15.60000	15	1
XXL	40.00000	30.00000	60.00000	15.00000	16.20000	15	1
3XL	40.00000	30.00000	60.00000	15.30000	16.50000	15	1